



The Symbol Of Quality

**SLITTING AND
SHEARING
OF STAINLESS / STEEL
COILS & SHEETS**



INTRODUCTION

ASTINO BERHAD was incorporated in the year 2000 as a holding company of Astino Group of Companies. The listing of ASTINO BERHAD on Bursa Malaysia Securities Berhad in the year 2003 has further strengthened the foundation of the Group and set the path to achieve further corporate growth and expansion.

The success of ASTINO BERHAD was built on the company's commitment to strive for continuous improvement on quality product and excellence in services. The Group is innovative and focuses in its drives to be corporation of distinction for sustained well-being off its customers, shareholders and employees.

PRINCIPAL APPLICATIONS

Our products are primarily used in the following market segments:-

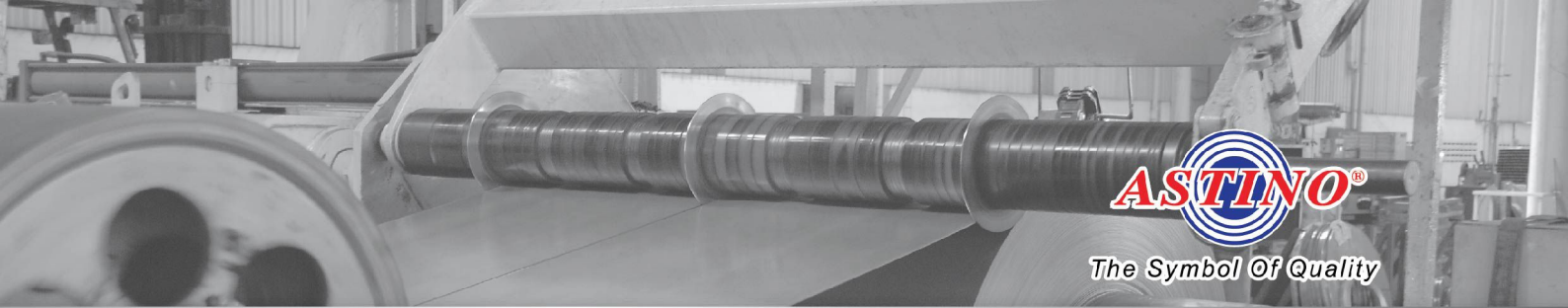
- Automotive Industry
- Home Appliances
- Consumer Electronics
- Furniture Industry
- Construction
- Air-Conditioning
- Electrical Trunking & Lighting And More...

CORE ACTIVITIES

Slitting and Shearing of Stainless/ Steel Coils and Sheets

- Hot Rolled Coil
- Hot Rolled Coil Pickled & Oiled Steel
- Cold Rolled Steel
- Galvanized Steel
- Pre- Painted Galvanized Steel
- Electro Galvanized Iron (EGI)





The Symbol Of Quality

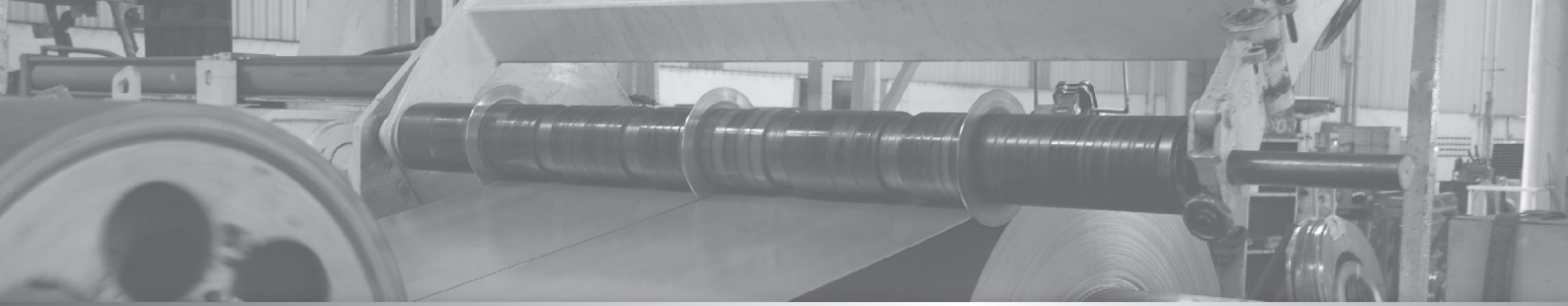
SL1 SLITTER (5FT)

SPECS	NAME	SL1 SLITTER (5 FT)	SPECS	NAME	SL1 SLITTER (5 FT)
Material Specification		SPHC,CR, EG, GI, CL, ALZ, SUS	Recoiler Max Load		20 MT
Thickness		0.27 - 3.0 mm	Tensioning		Tension Roll / Pad
M/C Width		400 - 1550 mm	Line Speed		Max 150 m / min
Uncoiler I.D.		508 / 610 mm	Line Length		25 m
Uncoiler O.D.		2000 mm (Max)	Line Direction		Left to Right
Uncoiler max. load		25 MT	Base Point of Line		Centre
Cutter Arbour		Spacer System	Cutting Width		22 - 1550 mm
Recoiler I.D.		508 mm	Tolerance on Width		+/- 0.2 mm
Recoiler O.D.		1500 mm (Max)	Cutting Method		Drive Cut
			Remarks		SUS (0.3 - 2.3 mm)



SL2 SLITTER (4FT)

SPECS	NAME	SL2 SLITTER (4 FT)	SPECS	NAME	SL2 SLITTER (4 FT)
Material Specification		SPHC,CR, EG, GI, CL, ALZ, SUS	Recoiler Max Load		20 MT
Thickness		0.17 - 2.0 mm	Tensioning		Belt Bridle / Pad
M/C Width		400 - 1300 mm	Line Speed		Max 200m / min
Uncoiler I.D.		508 / 610 mm	Line Length		22 m
Uncoiler O.D.		1800 mm (Max)	Line Direction		Right to Left
Uncoiler max. load		20 MT	Base Point of Line		Centre
Cutter Arbour		Spacer System	Cutting Width		22 - 1300 mm
Recoiler I.D.		508 mm	Tolerance on Width		+/- 0.2 mm
Recoiler O.D.		1800 mm (Max)	Cutting Method		Drive Cut
			Remarks		SUS (0.2 - 1.5 mm)



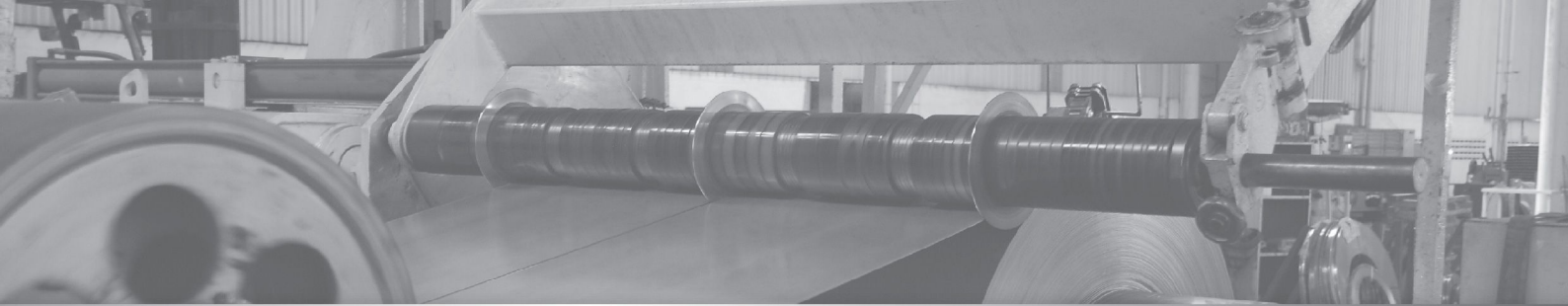
SL3 MINI SLITTER (2 FT)

SPECS	NAME	SL3 MINI SLITTER (2 FT)	SPECS	NAME	SL3 MINI SLITTER (2 FT)
Material Specification		SPHC, CR, EG, GI, CL, ALZ, SUS	Recoiler Max Load		8.0 MT
Thickness		0.2 - 2.3 mm	Tensioning		Tension Pad
M/C Width		50 - 650 mm	Line Speed		Max 200 m / min
Uncoiler I.D.		305 / 510 mm	Line Length		14.5 m
Uncoiler O.D.		1600 mm (Max)	Line Direction		Left to Right
Uncoiler max. load		8.0 MT	Base Point of Line		Centre
Cutter Arbour		Spacer System	Cutting Width		15 - 650 mm
Recoiler I.D.		305 / 508 mm	Tolerance on Width		+/- 0.2 mm
Recoiler O.D.		1500 mm (Max)	Cutting Method		Drive Cut

LS LEVELLER SHEAR (4 FT)

SPECS	NAME	LS (4 FT)	SPECS	NAME	LS (4 FT)
Material Specification		SPHC, CR, EG, GI, CL, ALZ, SUS	Line Speed		Max 15 m / min
Thickness		0.17 - 1.2 mm	Line Length		25.5 m
M/C Width		600 - 1250 mm	Line Direction		Right to Left
Uncoiler I.D.		508 / 610 mm	Base Point of Line		Centre
Uncoiler O.D.		1500 mm (Max)	Cutting Width		600 - 1250 mm
Uncoiler max. load		15 MT	Cutting Length		300 - 2500 mm
Cutter Arbour		Stop Cut Shear	Tolerance on Width		Base on M / Coil
Piler		Duplicate / Air Blow	Tolerance on Length		+ / - 0.3 mm
Recoiler Max Load		Auto Piling	Cutting Method		Up / Scissor Cut





LS LEVELLER SHEAR (5FT)

SPECS	NAME	LS (5 FT)	SPECS	NAME	LS (5 FT)
Material Specification		SPHC, CR, EG, GI, CL, ALZ, SUS	Line Speed		Max 50 m / min
Thickness		0.2 - 3.0 mm	Line Length		31 m
M/C Width		600 - 1550 mm	Line Direction		Left to Right
Uncoiler I.D.		508 / 610 mm	Base Point of Line		Centre
Uncoiler O.D.		2000 mm (Max)	Cutting Width		600 - 1550 mm
Uncoiler max. load		25 MT	Cutting Length		400 - 4000 mm
Cutter Arbour		Stop Cut Shear	Tolerance on Width		Base on M / Coil
Piler		Duplicate / Air Blow	Tolerance on Length		+ / - 1.0 mm
Recoiler Max Load		Auto Piling	Cutting Method		Up / Scissor Cut
			Remarks		SUS (max 2.0 mm)



ML MINI LEVELLER (2FT)

SPECS	NAME	ML (2 FT)	SPECS	NAME	ML (2 FT)
Material Specification		SPHC, CR, EG, GI, CL, ALZ, SUS	Line Speed		Max 50 m / min
Thickness		0.17 - 1.2 mm	Line Length		14.3 m
M/C Width		200 - 800 mm	Line Direction		Left to Right
Uncoiler I.D.		508 mm	Base Point of Line		Centre
Uncoiler O.D.		1500 mm (Max)	Cutting Width		50 - 800 mm
Uncoiler max. load		8.0 MT	Cutting Length		150 - 1500 mm
Cutter Arbour		Stop Cut Shear	Tolerance on Width		800 mm
Piler		Duplicate / Air Blow	Tolerance on Length		+ / - 0.3 mm
Recoiler Max Load		Auto Piling	Cutting Method		Up / Scissor Cut



GUILLOTINE (GS 1)

SPECS	NAME	GS1	SPECS	NAME	GS1
Material Specification		SPHC, CR, EG, GI, CL, ALZ, SUS	Line Direction		Right to Left
Thickness		0.3 - 4.0 mm	Base Point of Line		Side Guide
M/C Width		2500 mm	Cutting Width		10 - 2440 mm
Knife:		2800 mm	Cutting Length		20 - 70 / 3000 mm
Cutter Arbour		Manual	Tolerance on Width		+ / - 0.2 mm
Piler		Duplicate / Air Blow	Tolerance on Length		+ / - 0.2 mm
Line Speed		60 spm	Cutting Method		Down - Cut
Line Length		5 m	Remarks		SUS (max 2.0 mm)



You Can Count On Us

CONSISTENCY

QUALITY

RELIABILITY



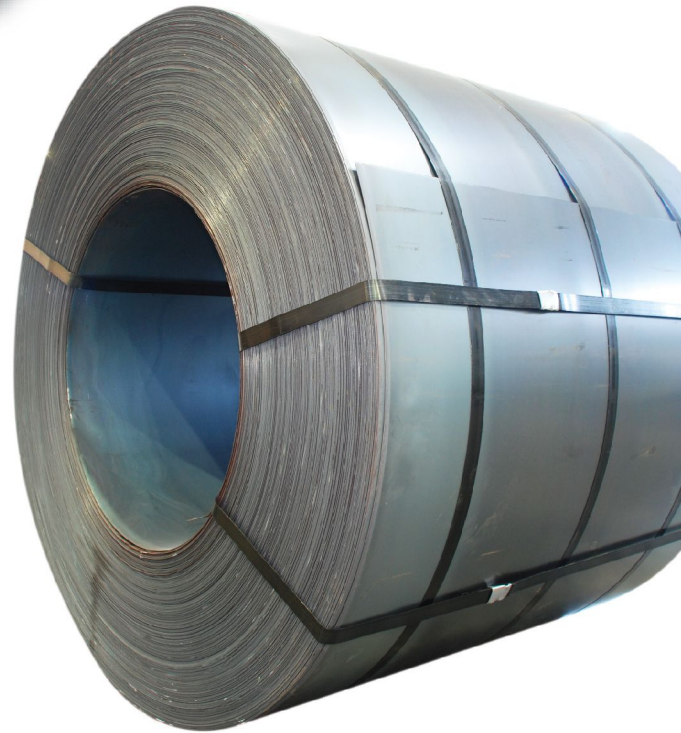
HOT ROLLED COIL

PRODUCT SPECIFICATIONS

PRODUCT	THICKNESS	WIDTH	COIL DIAMETER	COIL WEIGHT
Hot Rolled Coil	1.0mm - 21.0mm	900mm - 1575mm	Inner Diameter 760mm	10 MT - 30 MT

QUALITY SPECIFICATIONS

1. General Structure	: JIS G 3101 : JIS G 3131 : ASTM : BS EN 10025	SS330, SS400, SS490, SS540 SPHC, SPHD A36, A1011, A572, A131, A283, A285, A516 S235J2G3, S275J2G3, S355J2G3
2. Gas Cylinder	: JIS G3116 : EN 10120-1997	SG255, SG 295 P245NB, P265NB
3. Automobile Structurals / Rim	: JIS G 3113	SAPH370, SAPH400, SAPH440
4. Welded Structure	: JIS G 3106	SM400, SM490
5. Corrosion Resistant Steel	: JIS G3125 : ASTM	SPAH A242
6. Pipes and Tubes	: JIS G 3132 : ASTM	SPHT1, SPHT2, SPHT3, SPHT4 A500
7. Line Pipes	: API 5L	X42, X52, X56, X60, X65
8. Offshore Material	: BS 7191	275C, 355C, 355D



HOT ROLLED PICKLED & OILED STEEL

PRODUCT SPECIFICATIONS

STANDARD	SYMBOL	THICKNESS (MM)	WIDTH (MM)
JIS G3113	SAPH370 SAPH400 SAPH440	1.40 - 4.00	914 - 1250
JIS G3131	SPHC SPHD SPHE		
JIS G3101	SS330 SS400 SPHT1		
JIS G3132	SPHT2 SPHT3		

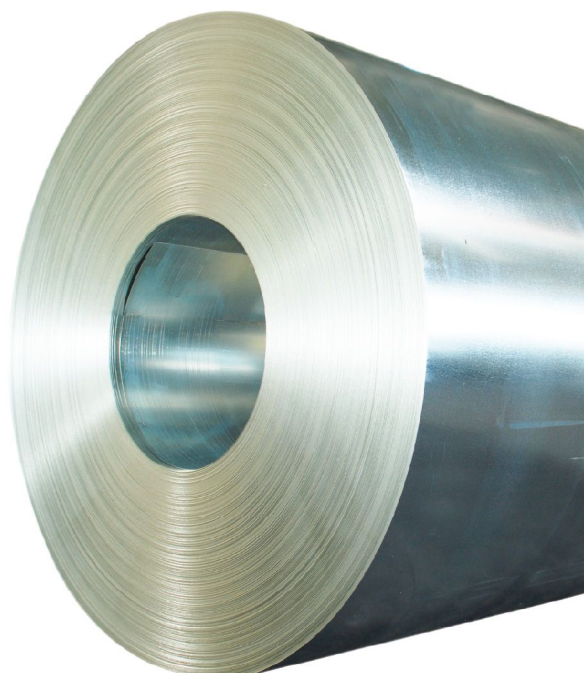


COLD ROLLED STEEL

STANDARD	SYMBOL	THICKNESS (MM)	WIDTH (MM)
JIS G3141	SPCC - 1B	0.17 - 2.60	914 - 1320
	SPCC - SD	0.40 - 2.60	
	SPCC - 2D	0.40 - 0.90	
	SPCC - 4D	0.40 - 0.90	
	SPCC - 8D	0.40 - 2.00	
	SPCD - SD	0.40 - 2.60	
	SPCE - SD	0.40 - 2.30	
	SPCEN - SD	0.40 - 1.60	
JIS G3141 (Modified)	SPCC - SD (Modified) DQI	0.40 - 2.30	
JIS G3135	SPFC370	0.40 - 2.00	
	SPFC440	0.40 - 0.90	

GALVANIZED STEEL

CATEGORY	SYMBOL	ZINC COATING MASS	THICKNESS (MM)	WIDTH (MM)
Structural Quality (SQ)	JIS G3302	Z12, Z15, Z18, Z22, Z27, Z30 (120-300 G/M ²)	BMT : 0.20 - 2.00	800 - 1250
	SGC 340			
	SGC 400			
	SGC 440			
	SGC 490			
	SGC 570			
Commercial Quality (CQ)	JIS G3302			
	SGCC			
Drawing Quality (DQ)	JIS G3302		BMT : 0.50 - 1.00	
	SGCD 1			





PRE-PAINTED GALVANIZED STEEL

PRODUCT SPECIFICATIONS

PAINT TYPES	SYMBOL	THICKNESS (MM)	WIDTH (MM)
PE - Exterior	JIS G3312	BMT : 0.176 - 1.200	800 - 1250
PVdF	CGCC		
Ever Fresh ®	CGC 340		
	CGC 400		
	CGC 440		
Hiflex	CGC 490		
	CGC 570		
Ever Cool ®	JIS G3312		
	CGCC		



ELECTRO GALVANIZED IRON (EGI)

Grade : Phosphate & Anti - Finger Print Sizes

Width	914 to 1300 mm
Coil ID	508 mm
Coil Weight	10 MT

PRODUCT SPECIFICATIONS

GRADE	THICKNESS (MM)	BASE METAL	REMARK
SECC	0.3 to 3.0	SPCC	Commercial
SECD		SPCD	Drawing
SECE		SPCE	Deep Drawing

■ JIS G3313



THE PRESENCE OF STEEL



**ASTINO
ROOFING**



**ASTINO
SCAFFOLDING**



**ASTINO
ARGO-HOUSE**



Highway Guardrails



Water Pipes



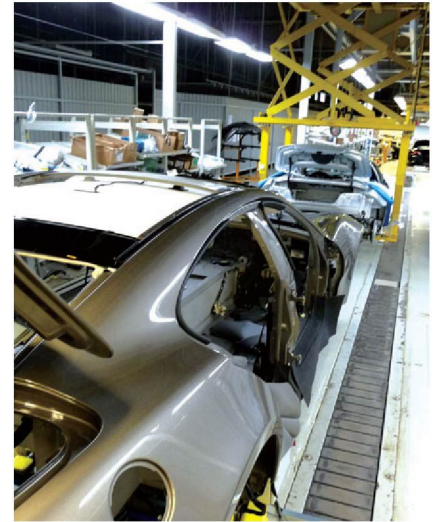
Gas Cylinders



Cargo Freight Containers and Cranes



Lamp Posts



Vehicle Chassis & Parts

OUR VISION

A preferred supplier of roofing and other building material products.

OUR MISSION

To supply our customers with Top Quality and Innovative Products at reasonable cost, in line with the nation's aspiration of zero inflation and satisfying customer requirements through personalized, efficient and reliable service, and establishing a mutually rewarding relationship.

QUALITY POLICY

Our commitment to strive for continuous improvement on quality products and excellent in services.

THE ASTINO BERHAD TEAM

The successes of Astino Berhad were built on the company's commitment to strive for continuous improvement on quality product and excellence in services.

The Group is innovative and focuses in its drives to be a corporation of distinction for the sustained well - being of its customers, shareholders and employees.



ASTINO BERHAD (523085-X)
OOI JOO KEE & BROTHERS SDN BHD (160858-D)
Lot 1218, Jalan Serunai, Kawasan Perusahaan Valdor, 14200 Sungai Bakap,
Seberang Perai Selatan, Pulau Pinang, Malaysia.
TEL : +604 - 582 9988 FAX : +604 - 582 8877 / 582 9977
EMAIL : ojk@astino.com.my

